



Houses in Kastellas/Kythnos





Kythnos island, is only 56 nautical miles away from Piraeus port, a distance which is covered within three hours by the ships that reach the island. From the port of Lavrio the distance is only two hours. It is the first island on the complex of West Cyclades between Kea and Serifos, it has a surface of 99 sq.km. and approximately 1500 inhabitants. Crystal clear water in more than 90 bays, small traditional villages, stone built small roads, houses with whitewashed walls, chapels and windmills, archaeological sites, create a perfect cycladic scenery that leaves the visitor spellbound.

Mass tourism hasn't reached this gem, which still keeps the traditional way of living and its unique character. Its untouched beauty, its calm atmosphere and its proximity to Athens, place Kythnos undoubtedly among one of the most picturesque cycladic islands and make it a top vacation destination. The island has been characterized by the Presidential Act of 931/2002 as one of unique natural beauty, protected by the ministry, where the traditional architectural style should be strictly followed for any planning permission issue. This results in the creation of a unified architectural result throughout the island, which follows all the local architectural archetypes.



Location : Kastellas, Kythnos

Property area : 4,093,85 sq.m

Surface of each house: 100 sq.m

Guesthouse 1 :24,05 sq.m

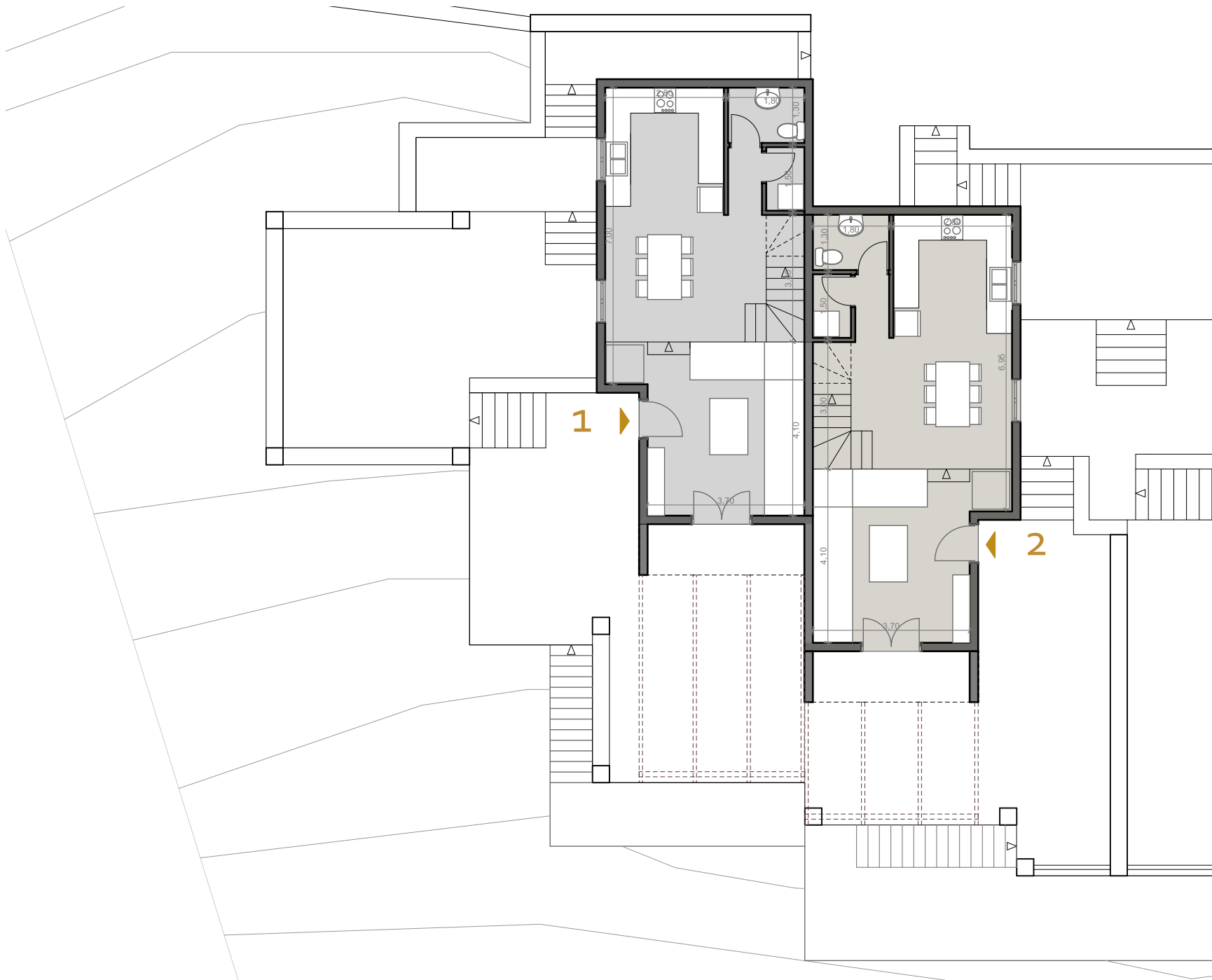
Guesthouse 2 :22,53 sq.m

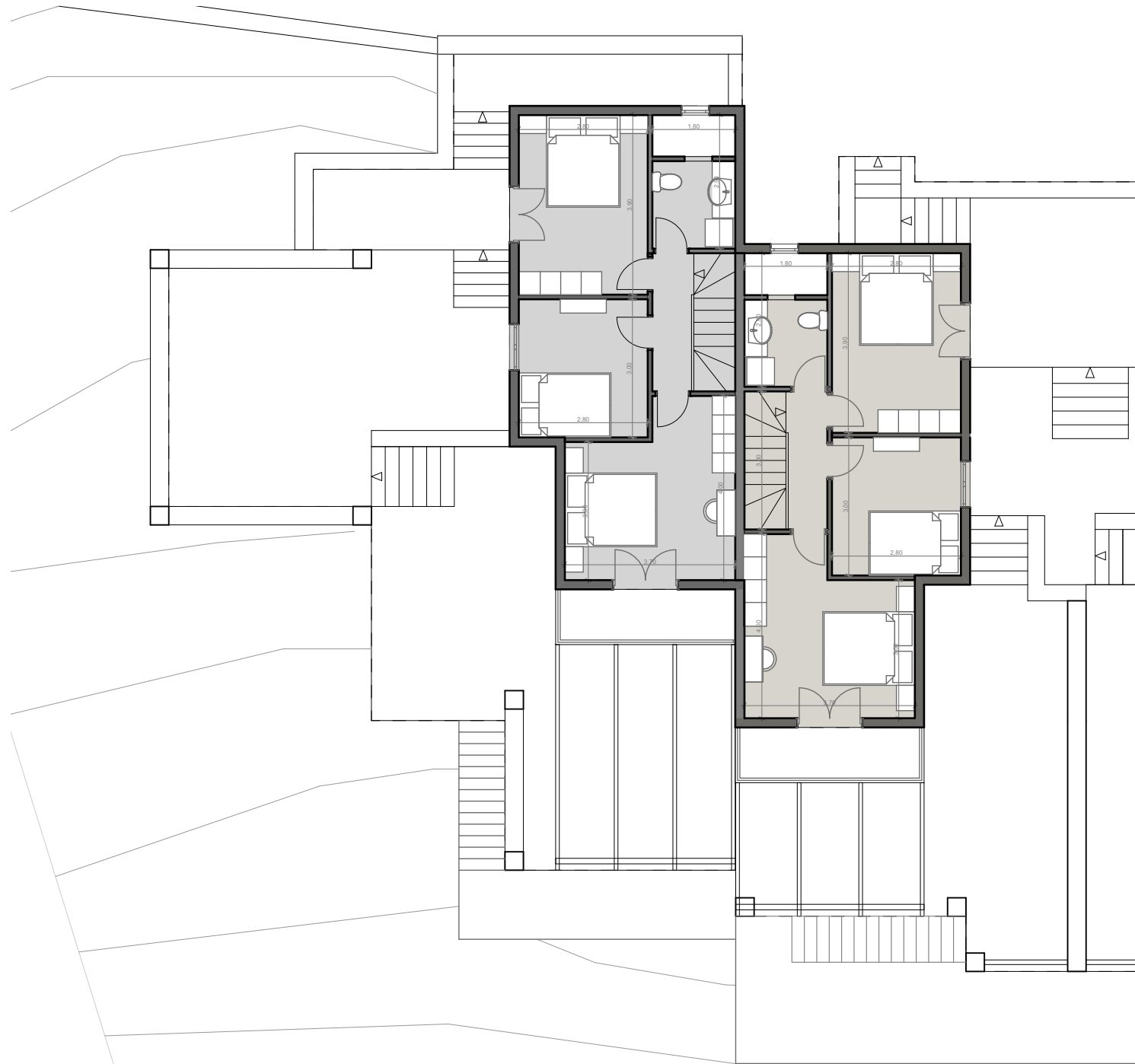
The complex of four independent houses and two guesthouses is situated in Kastellas, a serene, secluded beach at the South-west side of Kythnos next to the Flavouria seaside settlement. It consists of a series of simple geometric volumes that adjust to the natural terrain and accommodate the functional program of each house on two levels. The ground floor consists of an open plan living-dining room and fully equipped kitchen, as well as a guest bathroom and a storage room. The upper floor consists of three bedrooms and a bathroom. Each house has its own private terrace shaded by a pergola, with magnificent views of the sea and the Mediterranean landscape. The lowest level of the complex hosts the guesthouses. Each one of them consists of a bedroom, a kitchen and a bathroom. All of the properties have access to the swimming pool and its patio.

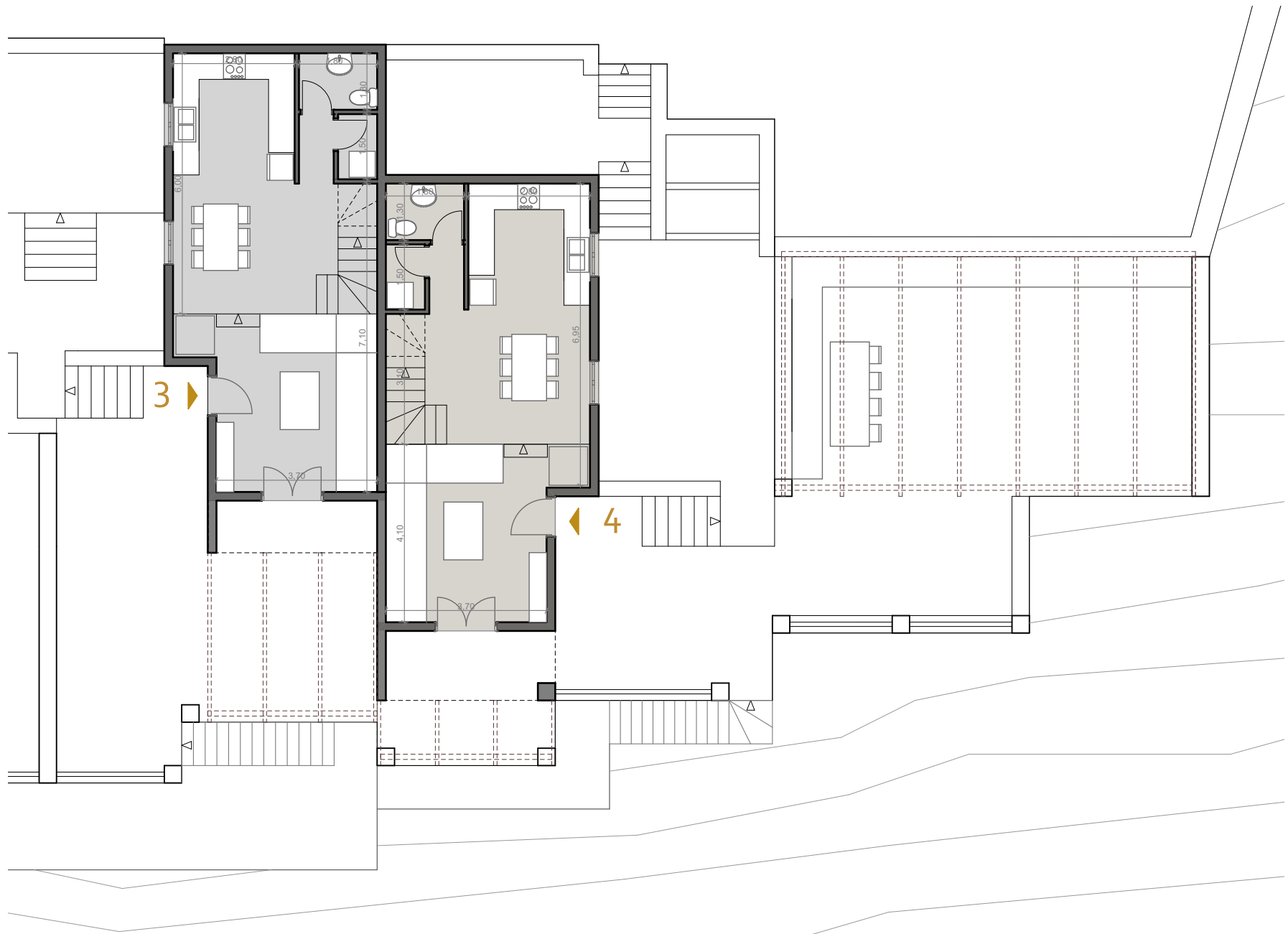
The interior design is inspired by the sophisticated simplicity of the Cycladic architecture, like the built-in furniture and the use of traditional materials. The same architectural vocabulary is also used in the exterior spaces.

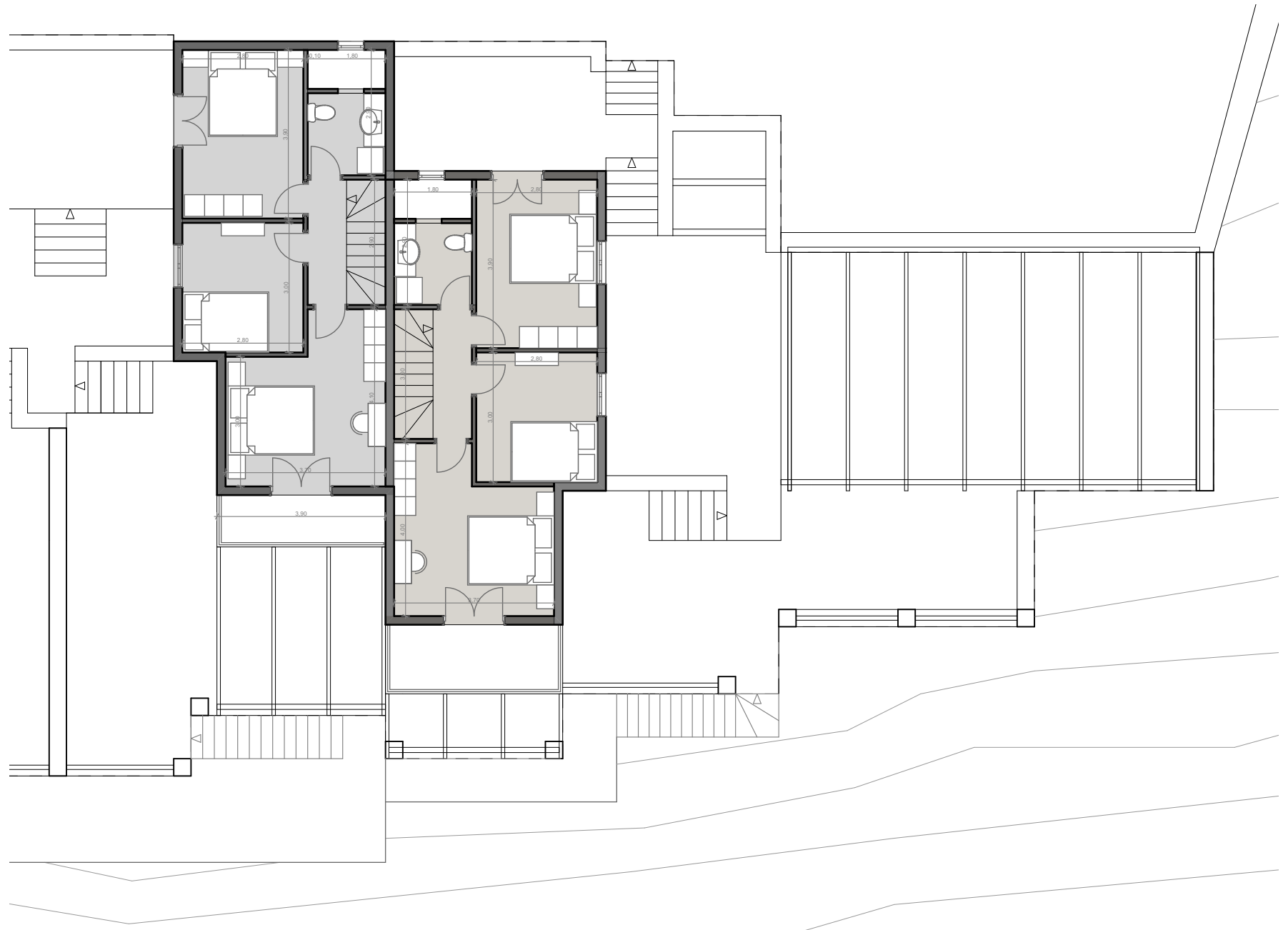


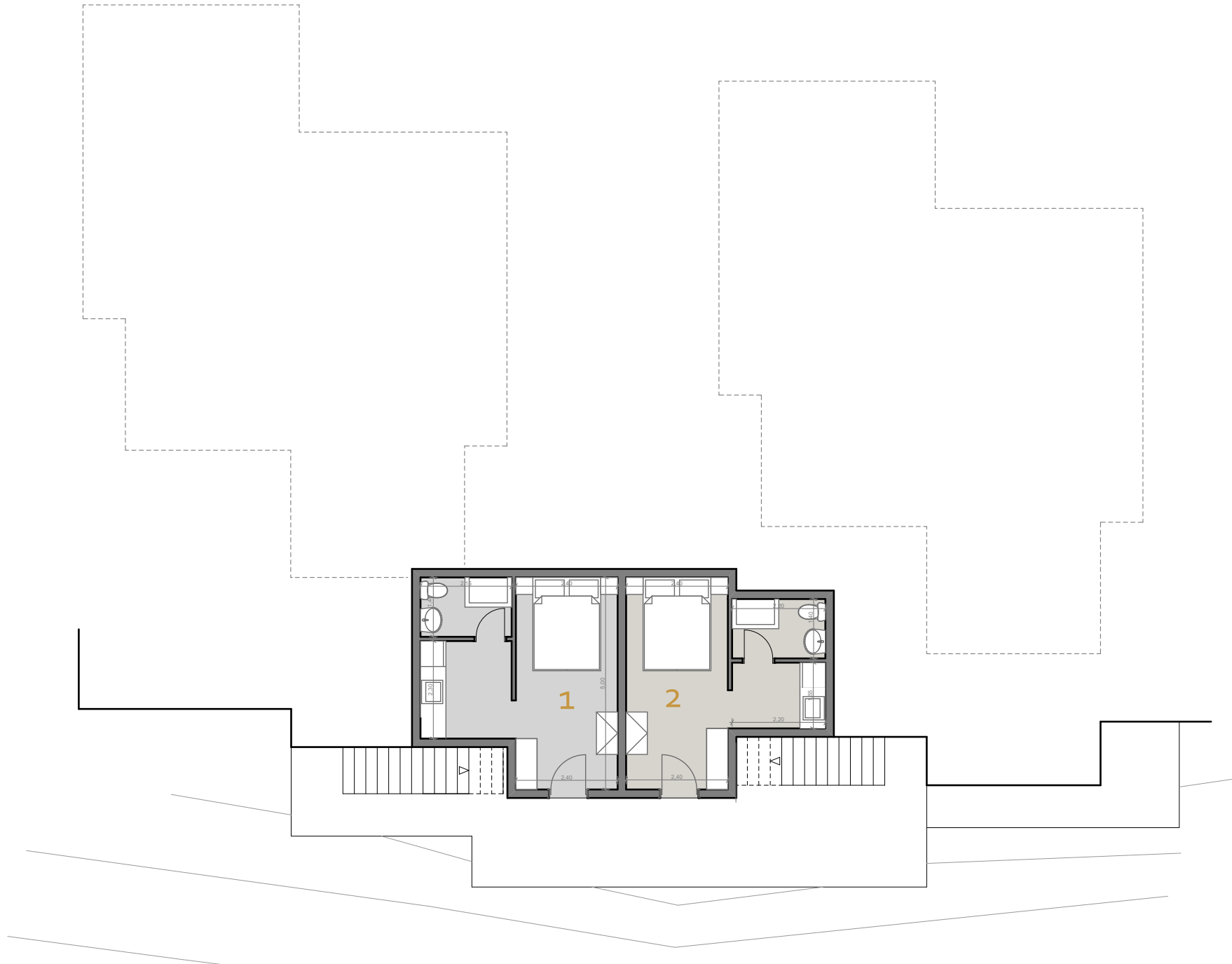


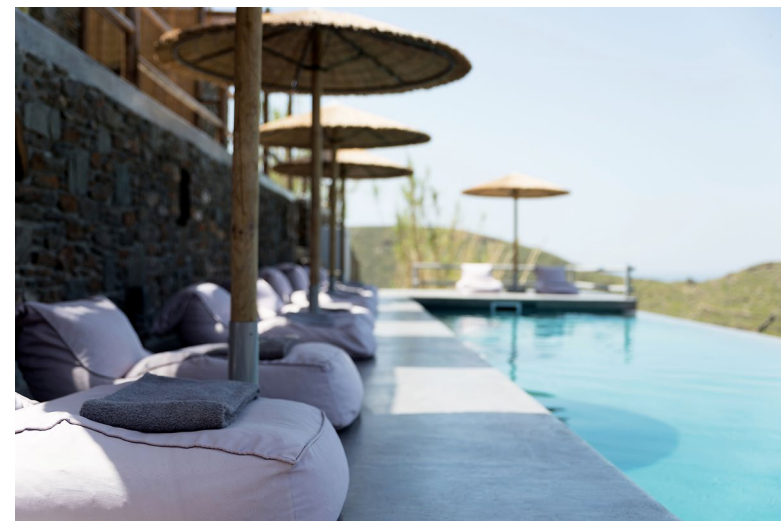
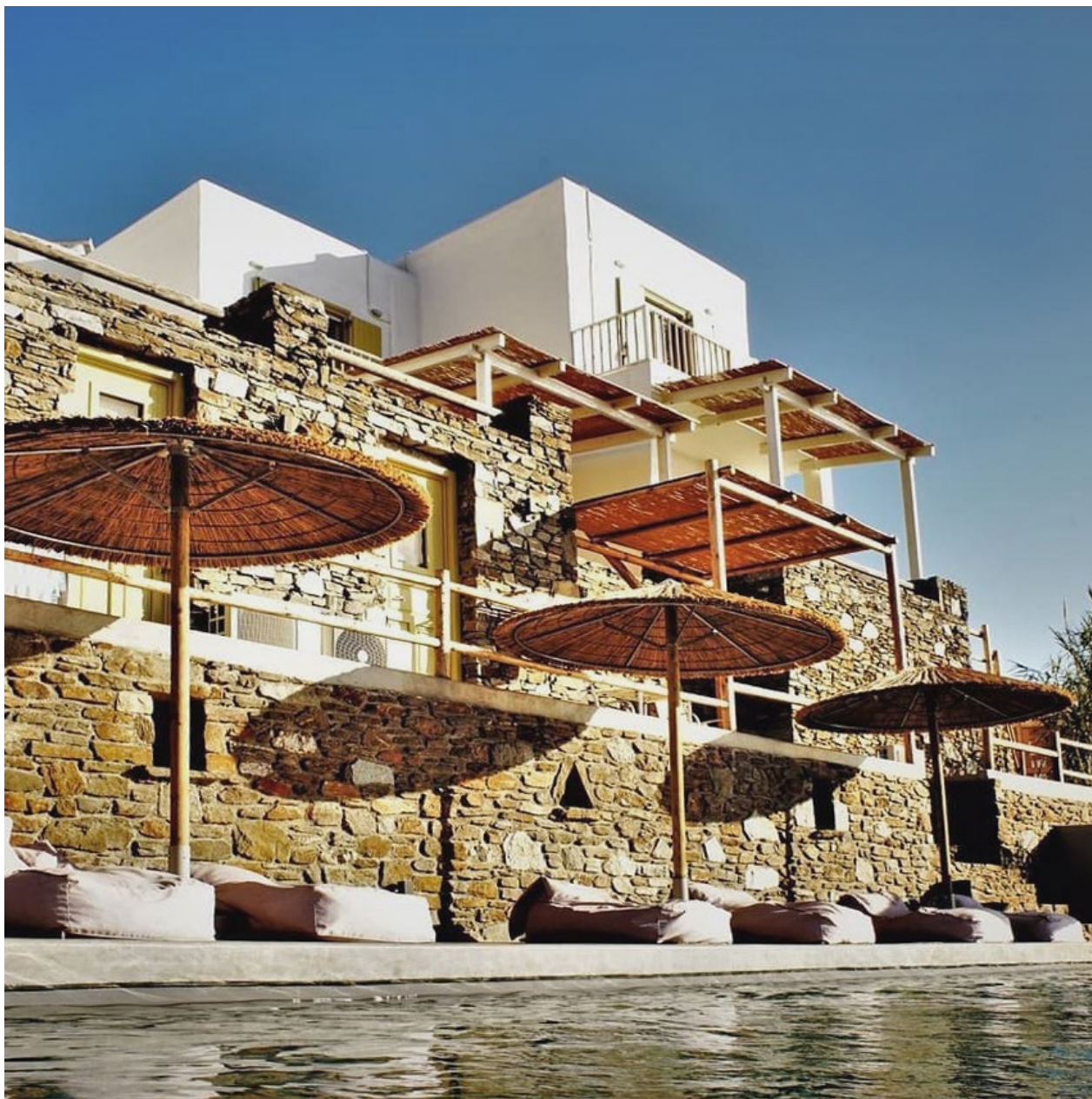
























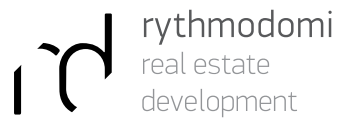












355 Kifisias Av., Kifisia, Athens

Tel. +30 210 8063628

Fax. +30 210 6148846

email. info@rythmodomi.gr

www.rythmodomi.gr

www.kforkythnos.com

